



# CONSTRUCTION SOLUTIONS

SOLUTIONS POUR LA CONSTRUCTION

LÖSUNGEN FÜR BAUMASCHINEN

# KEEPING YOU SAFE IN THE

AU SERVICE DE VOTRE SECURITE SICHERHEIT AM

# WORKPLACE

EN OPERATION

ARBEITSPLATZ

At ECCO Safety Group, we understand just how dangerous the construction industry can be and we're not just talking about working on high buildings on scaffolding, large amounts of exposed electrical wiring, safely handling machinery and tools or hazardous chemicals and minerals like asbestos. We are talking about the inherent danger of operating and working around large construction equipment used to move heavy materials. ECCO offers an extensive line of safety solutions that are ideally suited for all construction sites and vehicles. We make it our job to offer warning equipment to help minimise the risk of personal injury as well as property damage.

Chez ECCO Safety Group nous comprenons parfaitement l'importance de la sécurité dans l'industrie de la construction et nous ne parlons pas seulement de travaux sur des bâtiments élevés, sur des échafaudages, de grandes quantités de câbles électriques exposés, de la manipulation en toute sécurité de machines et d'outils ou de produits chimiques dangereux et de minéraux tels que l'amiante. Nous parlons du danger inhérent à l'utilisation et au travail de gros engins de chantier utilisés pour déplacer des matériaux lourds. ECCO propose une vaste gamme de solutions de sécurité parfaitement adaptée à tous les chantiers de construction et à tous les véhicules. Nous nous faisons un devoir de proposer des équipements d'alerte permettant de minimiser les risques de blessures et de dommages matériels.

Wir bei ECCO Safety Group wissen, wie gefährlich die Arbeit auf Baustellen sein kann und damit meinen wir nicht nur die Arbeit auf Gerüsten an hohen Gebäuden, mit elektrischen Verkabelungen, das sichere Bedienen von Maschinen und Werkzeugen oder den Umgang mit gefährlichen Chemikalien und Stoffen wie Asbest. Wir sprechen von der Gefahr im Umgang mit großen Baumaschinen, sowohl für den Fahrer, als auch für die Arbeit in deren näherem Umkreis. ECCO bietet eine große Auswahl an Sicherheitslösungen, welche auf sämtliche Anforderungen im Baubereich abgestimmt sind. Wir haben es uns zur Aufgabe gemacht, Warneinrichtungen zu entwickeln, welche helfen, Unfälle zu vermeiden und somit der Sicherheit von Mensch und Maschine dienen.



**These are simply a selection of products that we have chosen to suit Construction Vehicles. For our full comprehensive range, please refer to our websites and catalogues.**

Il s'agit d'une simple sélection de produits que nous avons choisis et qui conviennent aux véhicules de construction. Pour notre gamme complète, veuillez vous référer à nos sites Web et catalogues.

Dies ist nur eine Auswahl an Produkten, welche auf die harten Anforderungen für den Einsatz an Baumaschinen perfekt abgestimmt sind. Unser komplettes Sortiment finden Sie auf unserer Website oder in unseren Katalogen.

## SYMBOL GUIDE:

<b>C</b>	<b>T</b>	<b>V</b>	<b>A</b>	<b>F</b>	<b>L</b>	<b>#</b>	<b>dB(A)</b>				
Colour	Type	Volts	Amps	FPM	Length/ Lumens	Part No.	Decibels	Beam Pattern	Mount	Warranty	Approval

**ECCOESG.CO.UK**



ESGEMEA



esg-emea



ESG\_EMEA



ESG EMEA



esg\_emea

## 400 Series

R65 LED Beacons



# V11050

**C** Amber  
**V** 10-30  
**A** 0.7  
**F** 125 FPM  
**X** 3 Bolt  
⊗ R65, R10  
⌚ 3 Year



# V11052

**C** Amber  
**V** 10-30  
**A** 0.7  
**F** 125 FPM  
**X** 1 Bolt  
⊗ R65, R10  
⌚ 3 Year



# V11053

**C** Amber  
**V** 10-30  
**A** 0.7  
**F** 125 FPM  
**X** Mag 50  
⊗ R65, R10  
⌚ 3 Year



# V11057

**C** Amber  
**V** 10-30  
**A** 0.7  
**F** 125 FPM  
**X** 1 Bolt Flexi  
⊗ R65, R10  
⌚ 3 Year

## ECCOLED Silver

R65 LED Beacons



# EB5014A

**C** Amber  
**V** 12-24  
**A** 1.8  
**F** 135 FPM  
**X** 3 Bolt  
⊗ R65, R10  
⌚ 3 Year



# EB5016A

**C** Amber  
**V** 12-24  
**A** 1.8  
**F** 135 FPM  
**X** Flexi Pole  
⊗ R65, R10  
⌚ 3 Year



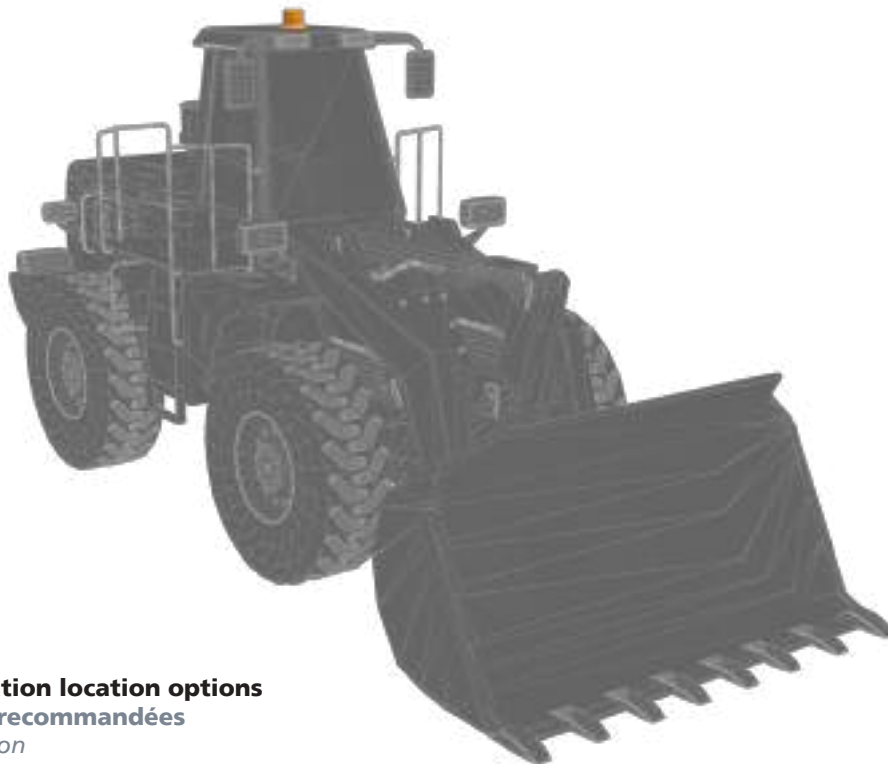
# EB7181CA

**C** Amber  
**V** 12-24  
**A** 6.2  
**F** 125 FPM  
**X** 4 Bolt  
⊗ R65 Class I, R10, IP55  
⌚ 3 Year



# EB7186AAA

**C** Amber  
**V** 12-24  
**A** 8.6  
**F** 125 FPM  
**X** 4 Bolt  
⊗ R65 Class II, R10, IP55  
⌚ 3 Year



**Recommended installation location options**

**Options d'installation recommandées**

*Empfohlene Anbauposition*

**OTHER MOUNT & COLOUR OPTIONS AVAILABLE**

AUTRES OPTIONS DE MONTAGE ET DE COULEUR DISPONIBLES  
WEITERE BEFESTIGUNGS- UND FARBOPTIONEN ERHÄLTICH

# LIGHTBARS

RAMPES LUMINEUSES

WARNBALKEN

## 12+ Series

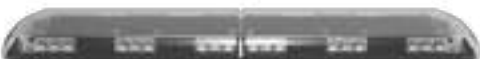
R65 LED Lightbar



- 610mm** # 12-30174-E  
**C** Amber  
**T** 12 LEDs  
**V** 12-24  
**A** 7.2  
✓ EMC, R65 Class I, R10  
⌚ 5 Year



- 1524mm** # 12-30011-E  
**C** Amber  
**T** 16 LEDs  
**V** 12-24  
**A** 9.6  
✓ EMC, R65 Class I, R10  
⌚ 5 Year



- 1212mm** # 12-30009-E  
**C** Amber  
**T** 16 LEDs  
**V** 12-24  
**A** 9.6  
✓ EMC, R65 Class I, R10  
⌚ 5 Year



- 1828mm** # 12-30016-E  
**C** Amber  
**T** 16 LEDs  
**V** 12-24  
**A** 9.6  
✓ EMC, R65 Class I, R10  
⌚ 5 Year

## 15L Series

R65 LED Lightbar



- 590mm** # 15L-21325-V  
**C** Amber  
**T** 12 LEDs  
**V** 12-24  
**A** 4.8  
✓ R10, R65  
⌚ 2 Year Lightbar  
5 Year Electrical



- 1372mm** # 15L-21328-V  
**C** Amber  
**T** 16 LEDs with opal centre  
**V** 12-24  
**A** 6.4  
✓ R10, R65  
⌚ 2 Year Lightbar  
5 Year Electrical



- 1240mm** # 15L-21327-V  
**C** Amber  
**T** 12 LEDs with opal centre  
**V** 12-24  
**A** 4.8  
✓ R10, R65  
⌚ 2 Year Lightbar  
5 Year Electrical



- 1760mm** # 15L-21330-V  
**C** Amber  
**T** 16 LEDs with opal centre  
**V** 12-24  
**A** 9.6  
✓ R10, R65  
⌚ 2 Year Lightbar  
5 Year Electrical

CUSTOM CONFIGURATIONS AVAILABLE

AURES CONFIGURATIONS DISPONIBLES  
WEITERE KONFIGURATIONEN VERFÜGBAR

[ECCOESG.CO.UK](http://ECCOESG.CO.UK)



ESGEMEA



esg-emea



ESG\_EMEA



ESG EMEA



esg\_emea

## A6 Series

R65 Aerolite LED Lightbar



520mm

# A6602.000.LDV

- C Amber
- T 2 LED Triple Stack
- V 12-24
- A 5.4
- ☑ R10, R65
- 🕒 5 Year



1250mm

# A6662.200.LDV

- C Amber
- T 2 LED Triple Stack with Centre Illumination
- V 12-24
- A 5.4
- ☑ R10, R65
- 🕒 5 Year



1000mm

# A6642.200.LDV

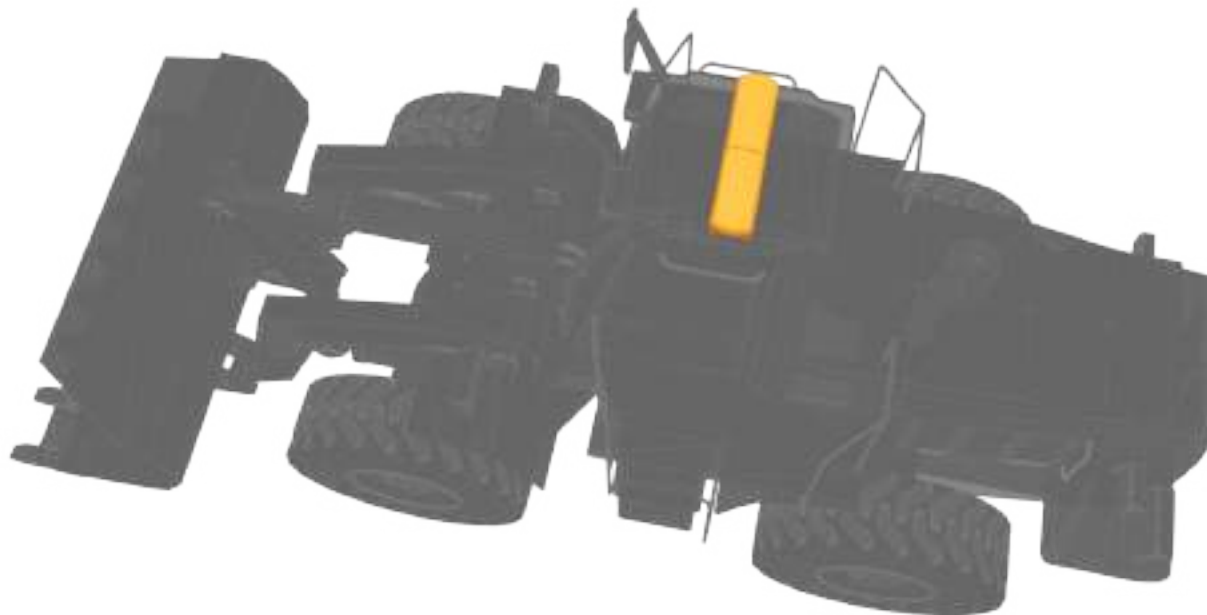
- C Amber
- T 2 LED Triple Stack with Centre Illumination
- V 12-24
- A 5.4
- ☑ R10, R65
- 🕒 5 Year



1500mm

# A6682.200.LDV

- C Amber
- T 2 LED Triple Stack with Centre Illumination
- V 12-24
- A 5.4
- ☑ R10, R65
- 🕒 5 Year



### Recommended installation location options

Options d'installation recommandées

Empfohlene Anbauposition

OTHER CONFIGURATIONS AVAILABLE

AUTRES CONFIGURATIONS DISPONIBLES  
WEITERE KONFIGURATIONEN VERFÜGBAR

# MINIBARS & DIRECTIONALS

MINI-RAMPES & FEUX DE PENETRATION

MINIBALKEN & BLITZLEUCHTEN



## Recommended installation location options

Options d'installation recommandées

Empfohlene Anbauposition

## 5565 Series

R65 LED Minibar



382mm # 5565A-VA1  
C Amber  
V 12-24  
A 2.7  
F 120 FPM  
X 1 Bolt  
R65, R10, IP65  
3 Year



382mm # 5565CA-VA1  
C Amber  
V 12-24  
A 2.7  
F 120 FPM  
X 1 Bolt  
R65, R10, IP65  
3 Year



248mm # A511.00.LDV  
C Amber  
V 12-24  
A 2.3  
F 120 FPM x 2  
X 1 Bolt  
R65, R10  
3 Year



400mm # A551.00.LDV  
C Amber  
V 12-24  
A 3.1  
F 120 FPM x 2  
X 1 Bolt  
R65, R10, IP65  
3 Year

## 5550 Series

R65 LED Microbar



278mm # 5550A-VA1  
C Amber  
V 12-24  
A 2.7  
F 120 FPM  
X 1 Bolt  
R65, R10, IP65,  
CE, RoHS  
3 Year



278mm # 5550CA-VA1  
C Amber  
V 12-24  
A 2.7  
F 120 FPM  
X 1 Bolt  
R65, R10, IP65,  
CE, RoSH  
3 Year



420mm # A491.00.LDV  
C Amber  
V 12-24  
A 1.0  
F 120 FPM x 2  
X 1 Bolt  
R65, R10  
3 Year



420mm # A491.40.LDV  
C Amber  
V 12-24  
A 1.0  
F 120 FPM x 2  
X 1 Bolt  
R65, R10  
3 Year

OTHER MOUNT & COLOUR OPTIONS AVAILABLE

AUTRES OPTIONS DE MONTAGE ET DE COULEUR DISPONIBLES  
WEITERE BEFESTIGUNGS- UND FARBOPTIONEN ERHALTLICH

ECCOESG.CO.UK



ESGEMEA



esg-emea



ESG\_EMEA



ESG EMEA



esg\_emea

# CONSTRUCTION SOLUTIONS



# ED5100CA  
**C** Amber  
**V** 10-30  
**A** 1.2  
**X** Surface/Bracket  
 Ⓞ R65, R10, IP67  
 Ⓟ 3 Year

AVAILABLE COLOURS



# 3812A  
**C** Amber  
**V** 12-48  
**A** 0.4  
**X** Surface/Bracket  
 Ⓞ R65, R10  
 Ⓟ 3 Year

AVAILABLE COLOURS



# ED3777A  
**C** Amber  
**V** 12-24  
**A** 1.8  
**X** Multi Mount  
 Ⓞ R65, R10, CE, IP67  
 Ⓟ 3 Year

AVAILABLE COLOURS



# ED5110A  
**C** Amber  
**V** 12-24  
**A** 1.0  
**X** Surface  
 Ⓞ R65, R10, IP69K  
 Ⓟ 3 Year

AVAILABLE COLOURS



# L55.10.DV  
**C** Amber  
**V** 12-24  
**A** 0.6  
**X** Surface  
 Ⓞ R65, R10, IP67  
 Ⓟ 5 Year

AVAILABLE COLOURS



# 3510A  
**C** Amber  
**V** 12-24  
**A** 0.75  
**X** Surface  
 Ⓞ R10, IP67  
 Ⓟ 5 Year

AVAILABLE COLOURS



# ED3706A Solid - or split-colour  
**C** Amber  
**V** 12-24  
**A** 0.9  
**X** Multi  
 Ⓞ R65, R10, IP67  
 Ⓟ 3 Year

AVAILABLE COLOURS



# ED3701A Single - or split-colour  
**C** Amber  
**V** 12-24  
**A** 0.9  
**X** Surface  
 Ⓞ R65, R10  
 Ⓟ 3 Year

AVAILABLE COLOURS



Where applicable, change 'A' in part number to available colour



**Recommended installation location options**

**Options d'installation recommandées**

*Empfohlene Anbauposition*

**OTHER MOUNT & COLOUR OPTIONS AVAILABLE**

AUTRES OPTIONS DE MONTAGE ET DE COULEUR DISPONIBLES  
 WEITERE BEFESTIGUNGS- UND FARBOPTIONEN ERHÄLTICH

# CAMERA SYSTEMS & ALARMS

SYSTEMES DE CAMERA & D'ALARMES DE RECU

KAMERASYSTEME UND ALARME

ECCO's comprehensive range of camera systems and reversing alarms are designed to prevent costly accidents, eliminate workplace injury and help to save lives. All products within our range are manufactured to both industry standards and the ECCO standard. Whatever your safety requirement, ECCO will be able to help you find the right solution to maximise visibility and enhancing safety on and off road.

ECCO also provide a range of mobile surveillance and tracking solutions for construction operational vehicles. Our technology can provide live monitoring of vehicle location, operational status of equipment, live video streams from inside and outside the vehicles, and messaging direct to the dashboard.

La gamme complète de systèmes de caméras et d'alarmes de recul d'ECCO est conçue pour éviter des accidents coûteux, éliminer les blessures sur le lieu de travail et contribuer à sauver des vies. Tous les produits de notre gamme sont fabriqués conformément aux normes de l'industrie et à la norme ECCO. Quelles que soient vos exigences en matière de sécurité, ECCO saura vous aider à trouver la bonne solution pour optimiser la visibilité et améliorer la sécurité sur et hors route.

ECCO propose également une gamme de solutions de surveillance et de suivi mobiles pour les véhicules de chantier. Notre technologie peut fournir une surveillance en direct de la localisation du véhicule, de l'état opérationnel de l'équipement, des flux vidéo en direct depuis l'intérieur et l'extérieur des véhicules, ainsi qu'une messagerie directe vers le tableau de bord.

ECCO's umfangreiches Sortiment an Kamerasystemen und Rückfahralarmen wurde entwickelt, um Unfälle zu vermeiden, Verletzungen am Arbeitsplatz zu verhindern und Leben zu retten. Alle unsere Produkte entsprechen sowohl den Industriestandards, als auch dem ECCO Standard. Was immer Sie benötigen, um bestmögliche Sicherheit zu gewährleisten ECCO unterstützt sie dabei, die passende Lösung zu finden, sowohl On-Road, als auch Off-Road.

ECCO bietet zudem ein umfangreiches Angebot an mobilen Überwachungs- und Fahrzeugverfolgungs-Systemen für Baufahrzeuge. Unsere Technologie umfasst Live-Monitoring des Fahrzeugstandortes, Betriebsstatus, Live Videostreams in und um das Fahrzeug, sowie die Übermittlung der Informationen.



## EC7000B-WK

\*7.0" LCD colour system  
2.4 GHz digital wireless system  
Internal controller  
Includes monitor sunshade  
Two camera expandable  
Wireless system - reduces installation time  
One year warranty



## EC5605-WK

\*5.6" LCD LCD colour screen  
2.4 GHz digital wireless system  
Internal controller  
Includes monitor sunshade  
Four camera expandable  
Wireless system - reduces installation time  
One year warranty



## K7000B

\*7" LCD colour system  
CMOS 18 LED infrared camera  
Includes monitor sunshade  
Two camera expandable  
One year warranty



## EC5603-SVK

\*5.6" LCD LCD colour screen  
CMOS 11 LED infrared camera  
Includes monitor sunshade  
Three camera expandable  
One year warranty

\*Traduction disponible

\*Übersetzung verfügbar



OTHER OPTIONS AVAILABLE

AUTRES OPTIONS DISPONIBLES  
WEITERE AUSFÜHRUNGEN ERHÄLTlich

ECCOESG.CO.UK







## Recommended installation location options

Options d'installation recommandées

Empfohlene Anbauposition



**# 530-001**  
**V** 12-24  
**dB(A)** 102  
**A** 0.2  
**X** 2 Bolt  
**⊗** SAE J994 Type F,  
 CE, R10, AMECA  
**⌚** 2 Year



**# 950-001** **SMART ALARM**  
**V** 12-24  
**dB(A)** 82-102  
**A** 0.4  
**X** 2 Bolt  
**⊗** CE, R10, UL, IP65  
**⌚** 2 Year



**# 575-001**  
**V** 12-24  
**dB(A)** 107  
**A** 0.9  
**X** 2 Bolt  
**⊗** SAE J994 Type B,  
 CE, R10  
**⌚** 2 Year



**# EA5050** **MULTI FREQUENCY**  
**V** 12-24  
**dB(A)** 87  
**A** 0.34  
**X** 2 Bolt  
**⊗** SAE J994 Type D,  
 CE, R10, AMECA  
**⌚** 2 Year



**# 520**  
**V** 12-24  
**dB(A)** 97  
**A** 0.2  
**X** 2 Bolt  
**⊗** SAE J994 Type C,  
 CE, R10, AMECA, IP65  
**⌚** 2 Year



**# 590-001**  
**V** 12-24  
**dB(A)** 102  
**A** 0.4  
**X** 2 Bolt  
**⊗** CE, R10, UL, IP64  
**⌚** 2 Year



**# 610N-001**  
**V** 12-36  
**dB(A)** 97  
**A** 0.4  
**X** 2 Bolt  
**⊗** SAE J994 Type C,  
 CE, R10, AMECA  
**⌚** ECCOLIFET™



**# 917N-001** **SMART ALARM** **MULTI FREQUENCY**  
**V** 12-24  
**dB(A)** 87-112  
**A** 1.5  
**X** 2 Bolt  
**⊗** SAE J994 Type F,  
 CE, R10, AMECA  
**⌚** ECCOLIFET™

OTHER OPTIONS AVAILABLE

AUTRES OPTIONS DISPONIBLES  
 WEITERE AUSFÜHRUNGEN ERHÄLTlich

# WHITE LIGHTING

ECLAIRAGE INTERIEUR & PROJECTEURS DE TRAVAIL

WEISSES LICHT



150mm

## # EW0116

- T 18 LED
- V 12
- A 0.4
- L 350 Raw, 350 Effective
- Flood
- CE, RoHS, IP65
- 3 Year

## # EW0126

- T 18 LED
- V 24
- A 0.1
- L 350 Raw, 350 Effective
- Flood
- CE, RoHS, IP65
- 3 Year



600mm

## # EW0117

- T 36 LED
- V 12
- A 0.7
- L 700 Raw, 700 Effective
- Flood
- CE, RoHS, IP65
- 3 Year

## # EW0127

- T 36 LED
- V 24
- A 0.4
- L 700 Raw, 700 Effective
- Flood
- CE, RoHS, IP65
- 3 Year



170mm CLEAR

## # EW0320

- T 8 LED
- V 12-24
- A 0.1
- L 200 Raw, 200 Effective
- Flood
- CE, RoHS,
- 3 Year



350mm MODULAR FROST

## # EW0351

- T 16 LED
- V 12
- A 0.5
- L 300 Raw, 250 Effective
- Flood
- CE, RoHS
- 3 Year



CONNECT MULTIPLE UNITS TOGETHER

Multiple lengths available



330mm

## # L897.00.LDV

- T LED
- V 10-32
- A 0.15
- L 130mm
- 130 Effective
- R10
- 5 Year

Bulb version also available



450mm

## # EW0600

- T 96 LED
- V 12-24
- A 1.7
- L 2000 Raw, 1900 Effective
- Flood
- CE, RoHS
- 3 Year



140mm

## # EW0400

- T 10 LED
- V 12-24
- A 0.4
- L 200 Raw, 200 Effective
- Flood
- CE, R10, RoHS, IP64
- 3 Year



300mm

## # EW0401

- T 22 LED
- V 12-24
- A 0.7
- L 450 Raw, 450 Effective
- Flood
- CE, R10, RoHS, IP64
- 3 Year



330mm

## # EW0700

- T 6 LED
- V 12-24
- A 0.5
- L 400 Raw, 350 Effective
- Flood
- CE, RoHS
- 3 Year



560mm

## # EW0701

- T 12 LED
- V 12-24
- A 0.9
- L 1250 Raw, 1200 Effective
- Flood
- CE, RoHS
- 3 Year

OTHER LENGTH & TYPE OPTIONS AVAILABLE

AUTRES OPTIONS DE LONGUEUR ET DE TYPE DISPONIBLES  
WEITERE LÄNGEN UND AUSFÜHRUNGEN ERHÄLTlich

ECCOESG.CO.UK



ESGEMEA

esg-emea

ESG\_EMEA

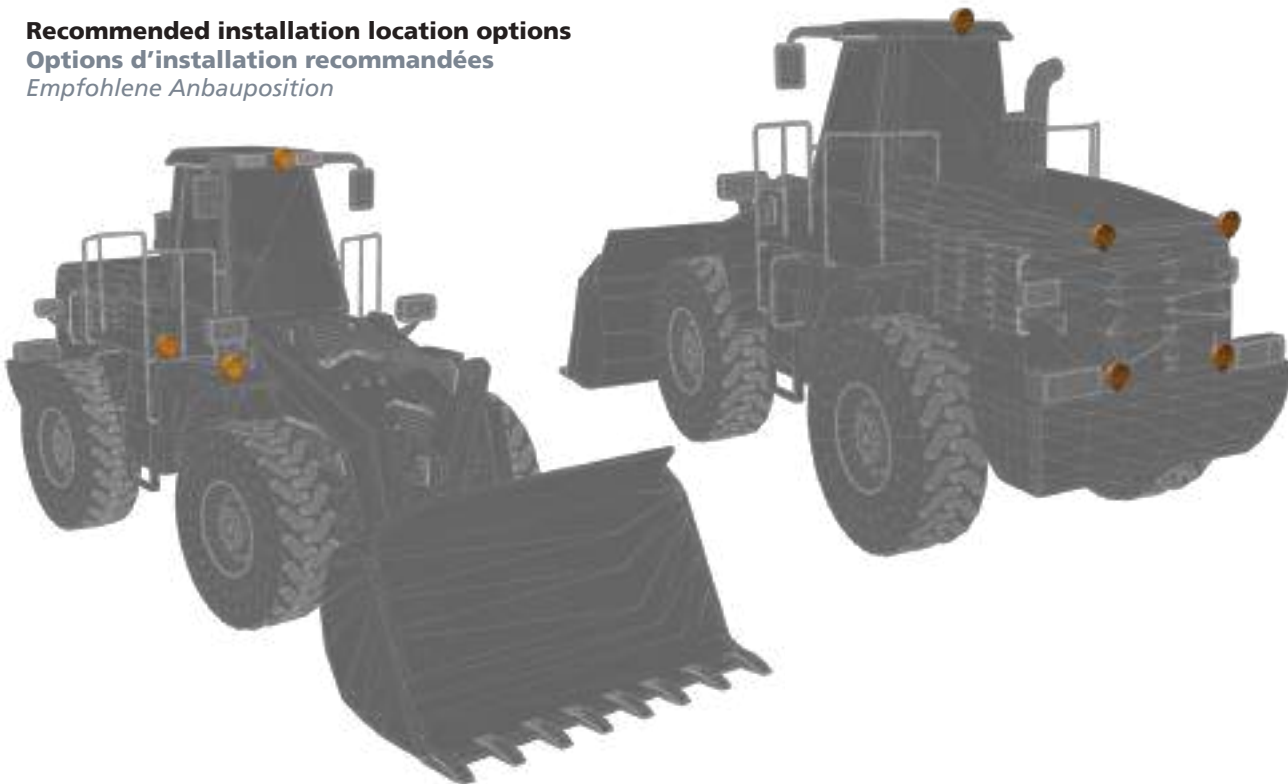
ESG EMEA

esg\_emea

## Recommended installation location options

Options d'installation recommandées

Empfohlene Anbauposition



# EW2451  
**V** 12-24  
**A** 2.2  
**L** 1300 Raw, 1100 Effective  
 Flood  
 CE  
 3 Year



# EW2461  
**V** 12-24  
**A** 3.2  
**L** 650 Raw, 600 Effective  
 Flood  
 IP67, CE  
 1 Year



# EW2471  
**V** 12-24  
**A** 1.2  
**L** 550 Raw, 500 Effective  
 Flood  
 IP67, CE, R10  
 3 Year



# E92027  
**V** 12-24  
**A** 1.2  
**L** 900 Raw, 850 Effective  
 Flood  
 IP67, CE  
 2 Year



# EW2431  
**V** 12-24  
**A** 3.1  
**L** 2600 Raw, 2100 Effective  
 Flood  
 IP67, CE  
 2 Year



# EW2411  
**V** 12-24  
**A** 1.3  
**L** 1000 Raw, 900 Effective  
 Flood  
 IP67, CE, R10  
 2 Year



# EW2501  
**V** 12-24  
**A** 3.0  
**L** 2900 Raw, 2450 Effective  
 Flood  
 IP67, CE  
 2 Year



# EW3124  
**V** 12-24  
**A** 8.7  
**L** 5900 Raw, 4400 Effective  
 Flood / Spot Combo  
 R10  
 3 Year

OTHER OPTIONS AVAILABLE

AUTRES OPTIONS DISPONIBLES  
 WEITERE AUSFÜHRUNGEN ERHÄLTlich

# MANDATORY & MIRRORS

ECLAIRAGE REGLEMENTAIRE & RETROVISEURS

VORGESCHRIEBENE FAHRZEUGBELEUCHTUNG UND SPIEGEL



**L13.00.LDV**  
LED Rear combination lamp  
12-24 VDC  
Fog function also available  
2 bolt mount  
R6, R7, R23, R38, R10, IP67  
Five years warranty



**L13.01.LDV**  
LED Rear combination lamp  
12-24 VDC  
Fog function included  
2 bolt mount  
R6, R7, R23, R38, R10, IP67  
Five years warranty



**L12.01.LDV**  
LED Rear combination lamp  
12-24 VDC  
Other options available  
2 bolt mount  
R6, R7, R23, R38, R10, IP67  
Five years warranty



**L12.500.LDV**  
LED Rear combination lamp  
12-24 VDC  
5 functions ST/DI/Fog/Reverse  
2 bolt mount  
R6, R7, R23, R38, R10  
Five years warranty



**L450.100.LMV**  
LED marker lamp  
12-24 VDC  
2 bolt mount  
R10, R7, R91  
Five years warranty



**L450.200.LMV**  
LED marker lamp  
12-24 VDC  
2 bolt mount 60°  
R10, R7, R91  
Five years warranty



**L450.300.LMV**  
LED marker lamp  
12-24 VDC  
2 bolt mount 90°  
R10, R7, R91  
Five years warranty



**ED00016A**  
Magnetic LED Warning Light  
Flashing and steady burn  
Neodymium magnet mount  
Powered by 4 AA batteries  
One year warranty



**L9004.00.LDV**  
LED rear combination lamp  
10-30 VDC  
Vertical and horizontal mount  
R10, R6, R7, R23, R38  
Five years warranty



**L867.00.LDV**  
Rear registrational LED Lamp  
10-30 VDC  
2 bolt mount  
R4, R10  
Five years warranty



**867.00.LB**  
Rear registrational Bulb Lamp  
12 or 24 VDC  
2 Bolt Mount  
R4  
Two years warranty



**868.00.LB**  
Rear registrational Bulb Lamp  
12 VDC  
2 Bolt Mount  
R4  
Two years warranty

## Recommended installation location options

### Options d'installation recommandées

Empfohlene Anbauposition



OTHER OPTIONS AVAILABLE

AUTRES OPTIONS DISPONIBLES  
WEITERE AUSFÜHRUNGEN ERHÄLTlich

**ECCOESG.CO.UK**



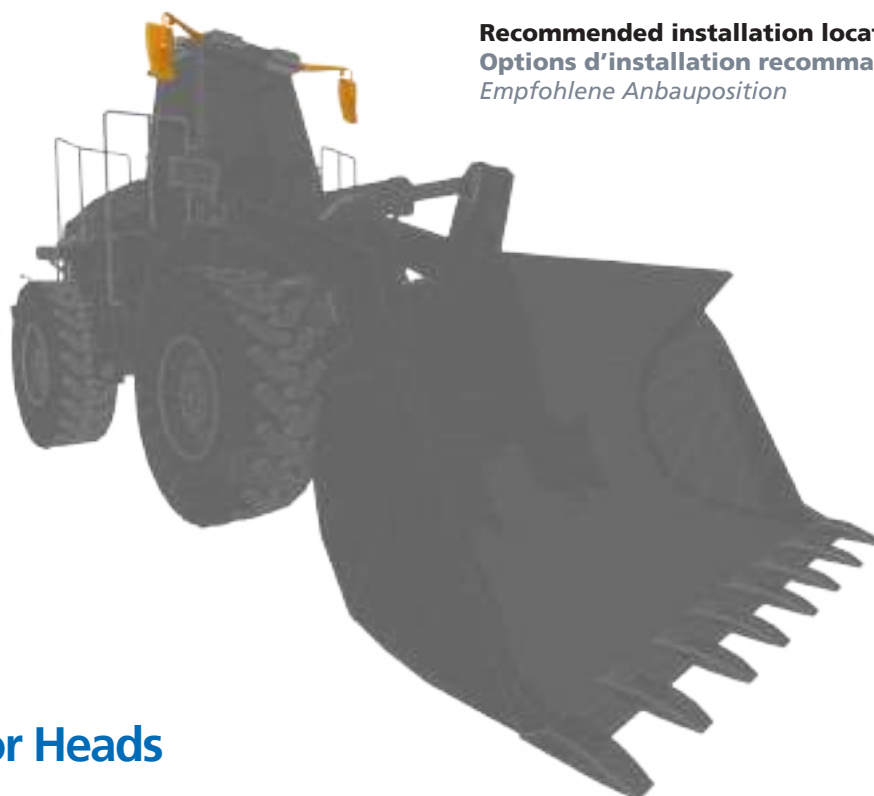
ESGEMEA

esg-emea

ESG\_EMEA

ESG EMEA

esg\_emea



**Recommended installation location options**  
**Options d'installation recommandées**  
*Empfohlene Anbauposition*

## Mirror Heads



**7106.000.A**  
 Rear view mirror.  
 Glass spherical radius  
 R1800mm. To fit  
 Ø22mm arms.  
 Two year warranty



**7112.020.AM**  
 Rear view mirror.  
 Glass spherical radius  
 R450. To fit arms  
 Ø10 - Ø22mm.  
 Two year warranty



**7132.201.A**  
 Rear view mirror  
 Glass spherical radius  
 R1400. To fit arms  
 Ø16mm - Ø22mm.  
 Two year warranty



**7182.301.AM**  
 Rear view mirror  
 Glass spherical radius  
 R1200. To fit arm  
 Ø16mm.  
 Two year warranty



**7182.320.A**  
 Universal fit rear view  
 mirror. Glass spherical  
 radius R2100mm. To fit  
 arms Ø10 - Ø22mm.  
 Two year warranty

## Mirror Arms



**7200.007.A**  
 Black. 'Midibrac' arm  
 assembly Ø16mm  
 tube. Spring loaded  
 adjustment. 2 x M6  
 mounting Holes.  
 Two year warranty



**7219.044/045**  
 Black. 'D' arm  
 assembly Ø16mm tube.  
 Spring loaded  
 adjustment. 4 x 11mm  
 mounting holes.  
 Two year warranty



**7200.050.A**  
 Black. 'Midibrac' arm  
 assembly Ø16mm tube.  
 Spring loaded  
 adjustment. 2 X M6  
 mounting holes.  
 Two year warranty



**7200.025.A**  
 Black. 'Midibrac' arm  
 assembly Ø16mm  
 tube. Spring loaded  
 adjustment. 2 X M6  
 mounting holes.  
 Two year warranty



**7200.099.A**  
 Black. 'Midibrac' arm  
 assembly Ø16mm tube.  
 Spring loaded  
 adjustment. 2 X M8  
 mounting holes.  
 Two year warranty

**OTHER OPTIONS AVAILABLE**

AUTRES OPTIONS DISPONIBLES  
 WEITERE AUSFÜHRUNGEN ERHÄLTlich



ESGEMEA



esg-emea



ESG\_EMEA



esg\_emea



ESG EMEA

## FOLLOW US

SUIVEZ NOUS | FOLLOW US

For a chance to win prizes, receive exclusive offers and get the latest news from ECCO! Search for **ECCOSAFETY** on Facebook and also check out Instagram, Twitter, YouTube and LinkedIn.

**Pour avoir une chance de gagner des prix, recevez des offres exclusives et recevez les dernières nouvelles d'ECCO! Recherchez ECCOSAFETY sur Facebook et consultez également Instagram, Twitter, YouTube et LinkedIn.**

*Suchen Sie nach ECCOSAFETY auf Facebook oder schauen Sie auf Instagram, Twitter, YouTube und LinkedIn – und gewinnen Sie Preise, erhalten exklusive Angebote, sowie die aktuellsten Neuheiten von ECCO!*

FOR MORE INFORMATION VISIT

**ECCOESG.CO.UK**

SLEEK. INTUITIVE. COMPREHENSIVE



**ECCO**

WHY ECCO PRODUCTS INDUSTRY RESOURCES

# BUILT RIGHT, BUILT TO LAST.

At ECCO, we know that your reputation is on the line with every construction job you undertake. That's why we make durable products that help you stay safe and focused under all kinds of conditions.

REAR VIEW

**MADE TO YOUR SPECIFIC NEEDS**

FRONT LOADER

[VIEW ALL FRONT LOADER PRODUCTS](#)



**BEST SELLING**  
360° ROTATED™ SERIES

**FEATURED**  
MULTI-FREQUENCY ALARMS

**PREMIUM CHOICE**  
EQUINOX™ SQUARE LED WORKLAMP

POUR PLUS D'INFORMATIONS VISITEZ LE NOUVEAU SITE ECCOESG.CO.UK, ATTRAYANT. INTUITIF. COMPLET

FÜR WEITERE INFORMATIONEN BESUCHEN SIE UNSERE NEUE WEBSITE ECCOESG.CO.UK


# ESG<sup>®</sup>

ECCO SAFETY GROUP

[ECCOESG.CO.UK](http://ECCOESG.CO.UK)

 [ESGEMEA](#)  [esg-emea](#)

 [ESG\\_EMEA](#)  [ESG EMEA](#)

 [esg\\_emea](#)

Distributed by:  
Distribué par:  
Erhältlich von:

MKT021



**ESG UK** (EMEA HQ) 

Unit 1, Green Park, Coal Road,  
Leeds, LS14 1FB, United Kingdom  
T: +44 (0)113 237 5340  
E: [sales@eccogroup.com](mailto:sales@eccogroup.com)

**ESG FRANCE** 

Bâtiment A15, 5 Avenue Lionel Terray,  
Meyzieu, 69330, France  
T: +33 4 78 79 60 00  
E: [adv@eccogroup.com](mailto:adv@eccogroup.com)

**ESG GERMANY** 

Riedweg 58-60,  
Ulm, 89081, Germany  
T: +49 731 935 210  
E: [ulm@eccogroup.com](mailto:ulm@eccogroup.com)